

ATTENTION: Contractors Architects Builders Developers
Consultants Engineers



SUNSHINE
SUPPLY COMPANY
INCORPORATED

Extravaganza

Friday, August 6th, 2010

9:00 a.m.—3:00 p.m.

4946 Naples Street, San Diego. California

800-400-7442

Technical Workshops

- | | |
|----------------------|---|
| 9:30 – 10:30 | Tremco Air Barriers: Marcy Tyler & Jose Janer from Tremco Technical Services, along with local Reps Chad Scoggins & Alan Cantarini, will give a product overview and application presentation on Tremco's various Air Barrier Membranes and accessories. |
| 10:45 – 11:45 | Protecto Wrap: Jack Hopkins, President & CEO of Protecto Wrap Products will provide an overview on how Jiffy Seal products are manufactured and why they are uniquely fabricated. |
| 12:30 – 1:30 | Sika: Adriano "A.B." Bortolin to cover Repair & Treatment Options for Cracks and Leaks in Concrete Balconies & Parking Structures. |
| 1:45 – 2:45 | Emseal Joint Systems: Gwynn Stegen, Western Regional Manager to demonstrate the installation of Emseal's Backer Seal, 2-Hour Fire Rated Expansion Joint & Seismic Color Seal. |

Product Displays & Demonstrations

*** Table Tops from more than 25 Manufacturers ***

Tremco · Sika Corporation · Protecto Wrap Company · CIM Industries · BASF Corporation
Xypex · GE Silicones –Momentive Performance Materials · Crossfield Products- Miracote
Excellent Coatings International · Tufflex Polymers · W R Meadows · Prosoco · JDR J-Drain
3M Company · Arizona Polymer Flooring · Neogard · Emseal Joint Systems Limited · Epro
Specified Technologies Fire Stop · Polycoat Products · Koester American Corporation · Sivent
Surtec · Simpson Strong Tie · Albion Engineering · Nelsonite Pool Coatings · Ellis Paint
Thunderbird Products · Pactiv · Newborn · Pipe Knife Company · The Slick Company

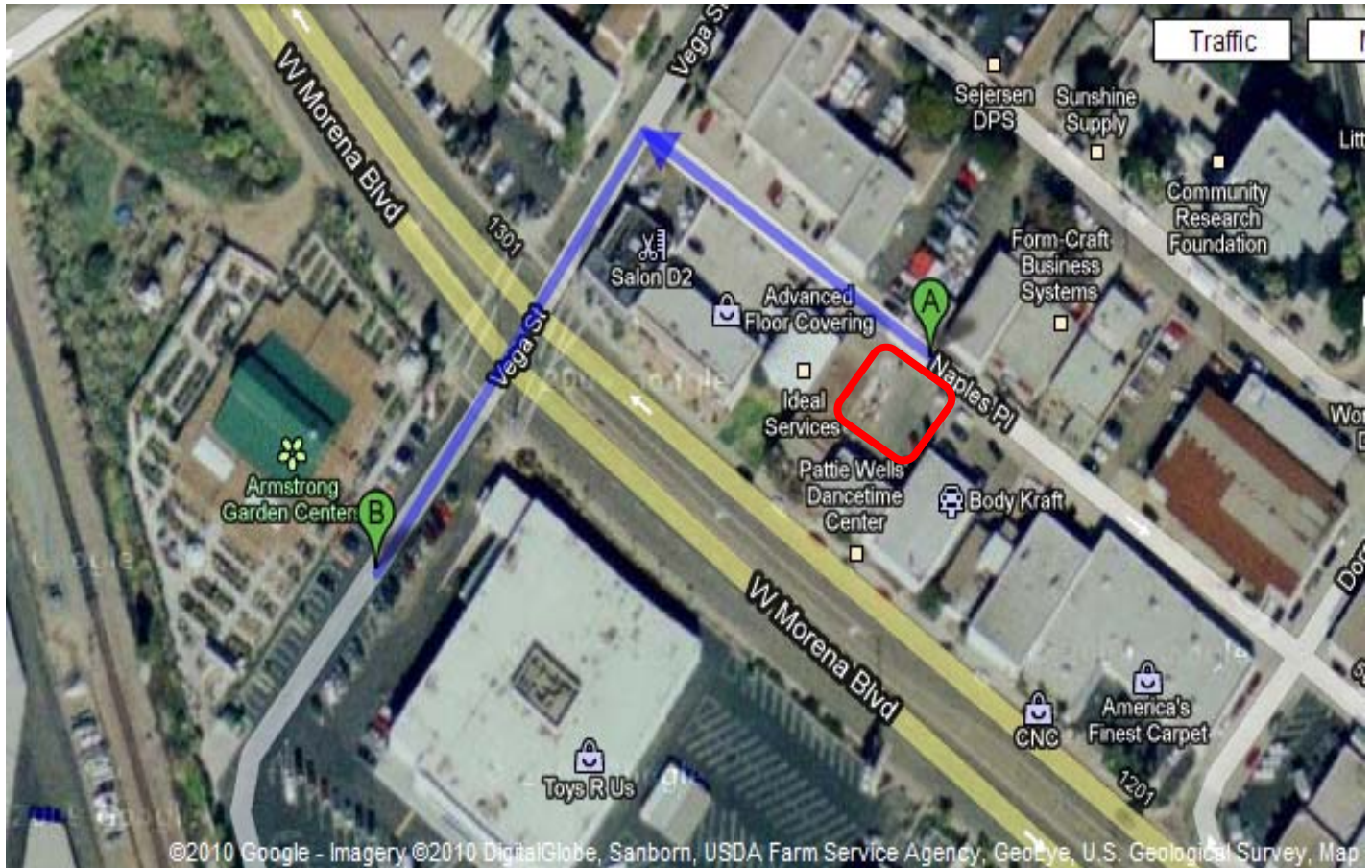
**Door
Prizes !!**

Food & Beverages


11:00 a.m. to 2:00 p.m.

*Bring business
cards... for door
prize entry*

Parking



Due to our limited parking availability, we ask that you please park on the surrounding streets or in the Toys-R-U's/Armstrong parking lot (shown on this map). The walk is an easy one that should only take a couple of minutes.

 -Location of Extravaganza!